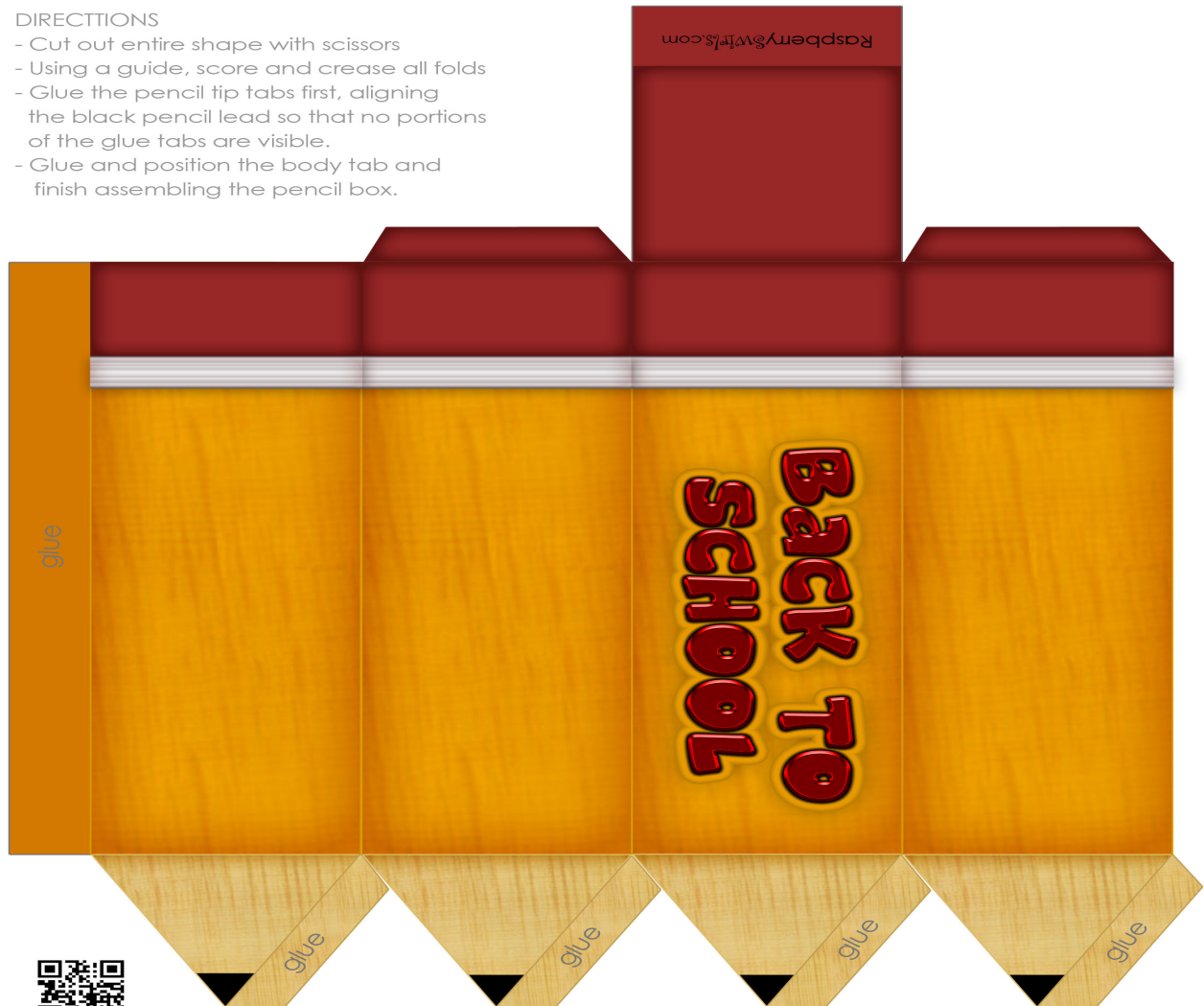


## DIRECTIONS

- Cut out entire shape with scissors
- Using a guide, score and crease all folds
- Glue the pencil tip tabs first, aligning the black pencil lead so that no portions of the glue tabs are visible.
- Glue and position the body tab and finish assembling the pencil box.



Visit us at <http://raspberryswirls.com>

This image is made available for personal use only.  
Use or modification of this image for resale or  
distribution either individually or in a collection is prohibited.