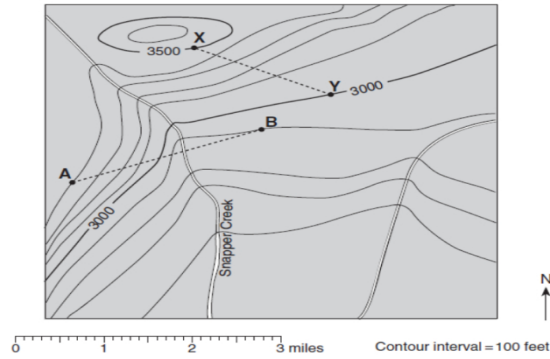


## Topographic Map Reading Worksheet

Use the following topographic map to answer questions 1-8.



1. What is the elevation at point A? \_\_\_\_\_
2. What is the elevation at point B? \_\_\_\_\_
3. What is the elevation at the point on line A-B where it crosses Snapper Creek?  
\_\_\_\_\_
4. If you walked from point A to point B along line A-B, would you be walking downhill or uphill, or both? In what direction would you be walking? Explain your answer, stating the elevations at point A, Snapper Creek and point B.  
\_\_\_\_\_  
\_\_\_\_\_
5. What is the elevation of the highest point shown on the map? \_\_\_\_\_
6. What is the elevation at point X? \_\_\_\_\_
7. What is the elevation at point Y? \_\_\_\_\_
8. If you walked from point X to point Y along line X-Y, would you be walking downhill or uphill, or both? In what direction would you be walking? Explain your answer, stating the elevations at point X and point Y. \_\_\_\_\_  
\_\_\_\_\_  
\_\_\_\_\_