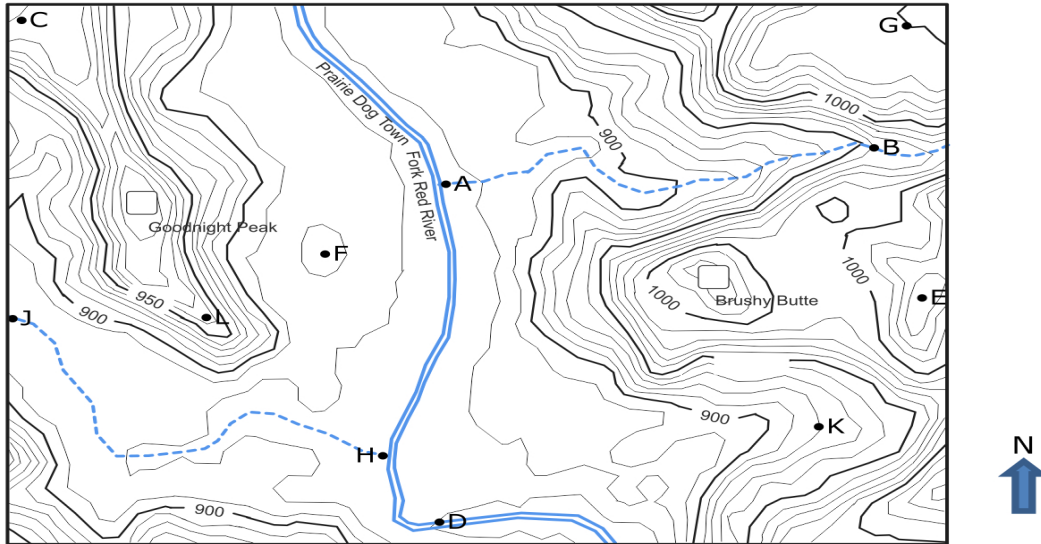
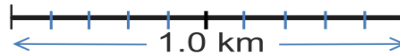


# TOPOGRAPHIC MAPPING PRACTICE

Use the following topographic map from Palo Duro Canyon State Park in west Texas to answer questions 1 - 5



Contour Interval = 10 meters



1. What is the elevation of Goodnight Peak?
2. What is the elevation of Brushy Butte?
3. What is the elevation of point A?
4. What is the elevation of point B?
5. If you walked along the creek from point A to point B, in what direction would you be walking?

Answer:

1. 950
2. 1021-1029 meters
3. 875 meters
4. 960 meters
5. east