

**You Make My  
Heart Melt**

Designer: Becky Olson

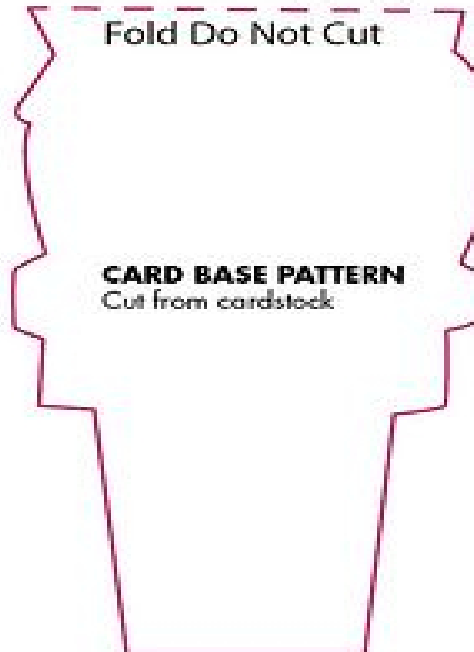
Card Creations: Start to Finish, v. 2  
Paper Crafts magazine, p. 95



**ICE CREAM SCOOP**

Cut 1 from Delicious paper  
Cut 1 from Pleasant paper

Fold 3 1/2" x 11" Paper  
in Half the Long Way



Fold Do Not Cut

**CARD BASE PATTERN**

Cut from cardstock



**CONE**

Cut from Graceful paper