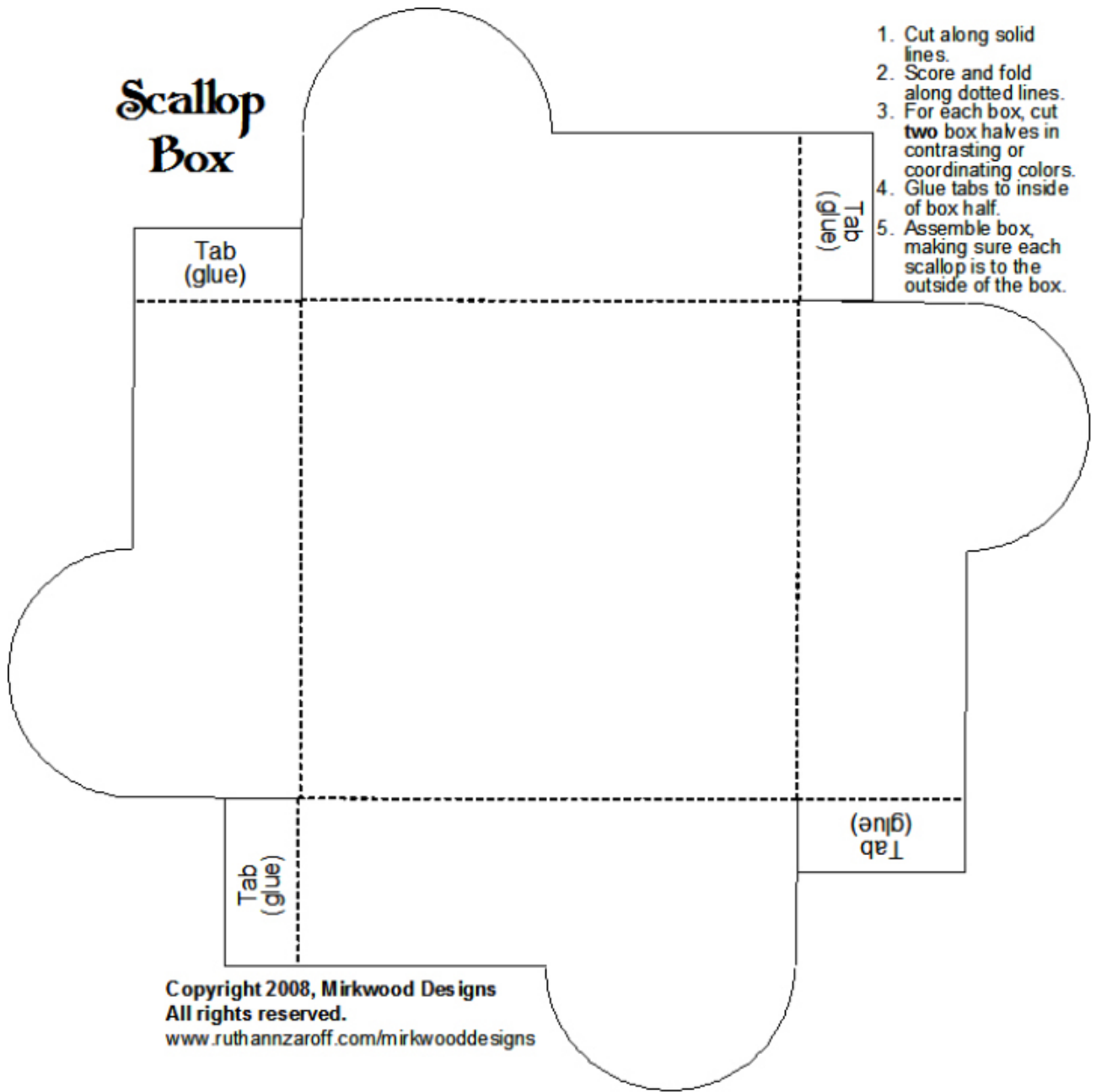


# Scallop Box



1. Cut along solid lines.
2. Score and fold along dotted lines.
3. For each box, cut **two** box halves in contrasting or coordinating colors.
4. Glue tabs to inside of box half.
5. Assemble box, making sure each scallop is to the outside of the box.

Copyright 2008, Mirkwood Designs  
All rights reserved.  
[www.ruthannzaroff.com/mirkwooddesigns](http://www.ruthannzaroff.com/mirkwooddesigns)