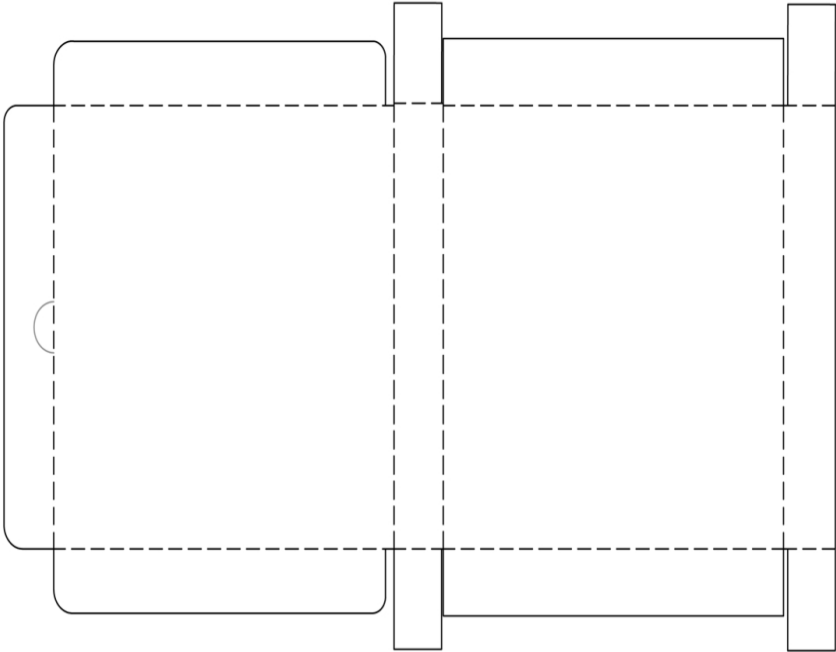


Pizza Box Template

www.schlosserdesigns.com

- 1. Print out template on the back of your patterned paper.
- 2. Cut out around all solid lines. With an x-acto knife cut the grey half circle line to make your notch on the top of the box.
- 3. Score and fold along all dashed lines. Fold the top of the box but not the notch that you cut.
- 4. Glue rectangular tabs to make the box bottom.



SCHLOSSER 