

# Raspberry Swirls Blank Candy Wrapper Box Template

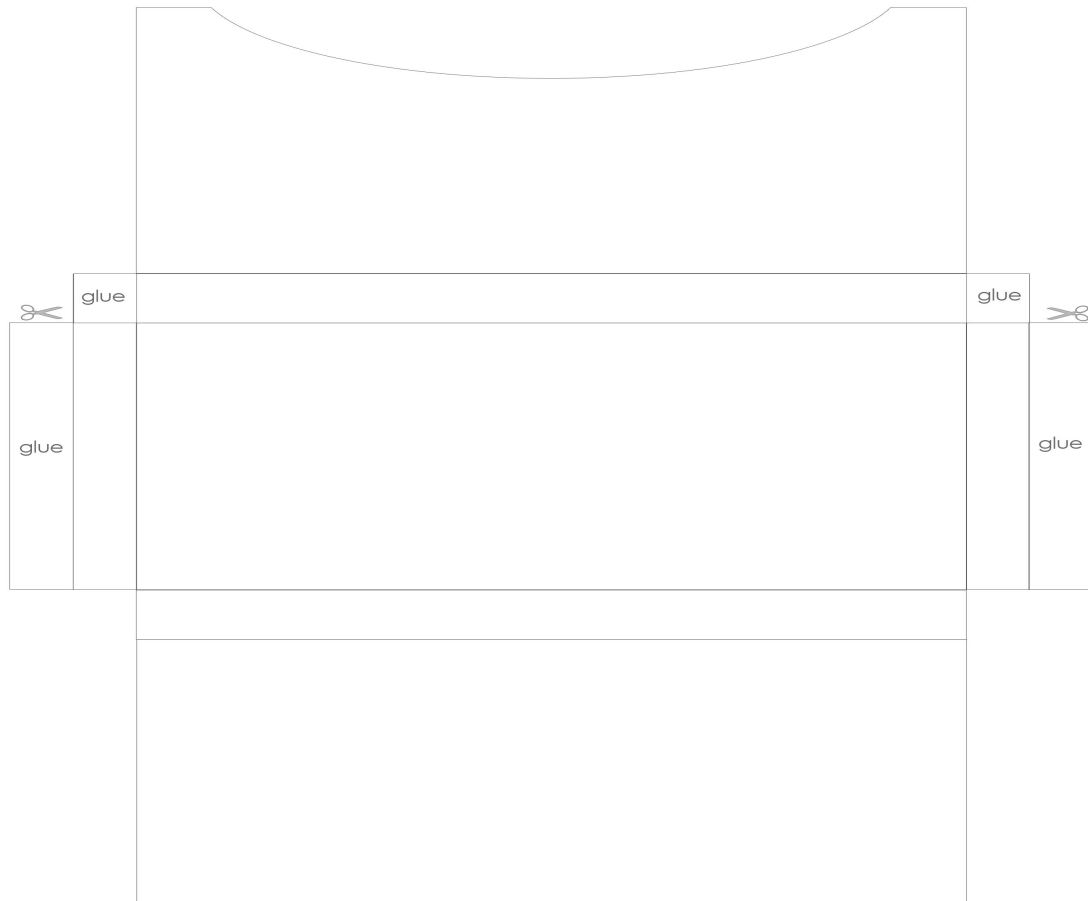
Score all the box folds then cut out box.

Cut the mini tab free from the center tab supports. ✂

Pre-fold the box then glue tabs to assemble.

Optional: cut the bottom edge of the cover flap with decorative scissors, or add a slight oval curve to the bottom.

Secure the cover flap using a ribbon or round sticker.



Visit us at <http://raspberryswirls.com>

This image is made available for personal use only. Use or modification of this image for resale or distribution either individually or in a collection is prohibited.

