

# 10:10 SNOWFLAKE TEMPLATE

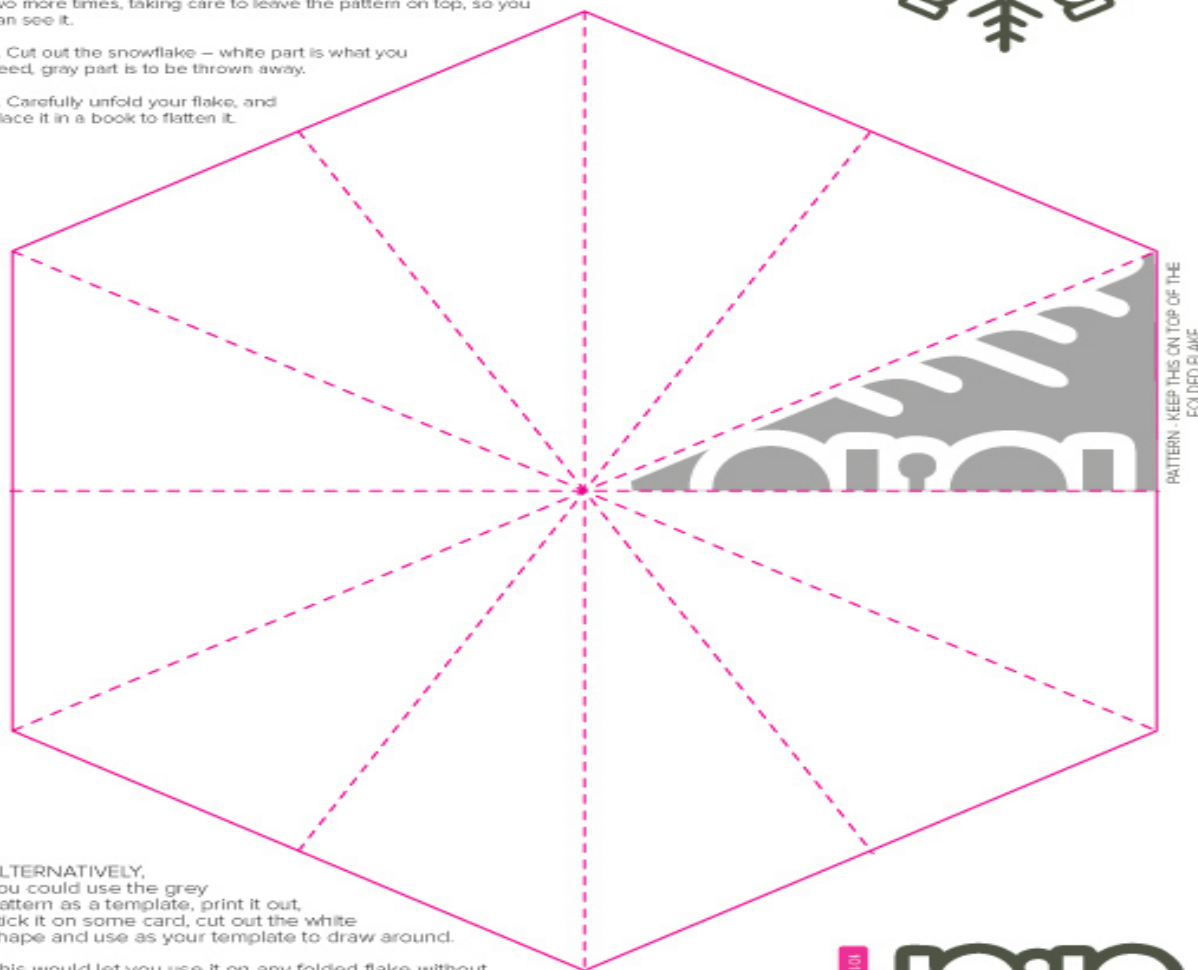


1. Print out the guide on **thin** paper – really good to use paper you have already used on one side – regular printer paper is fine.

2. Fold in half along the dotted line, then in half again, then fold two more times, taking care to leave the pattern on top, so you can see it.

3. Cut out the snowflake – white part is what you need, gray part is to be thrown away.

4. Carefully unfold your flake, and place it in a book to flatten it.



ALTERNATIVELY,  
you could use the grey  
pattern as a template, print it out,  
stick it on some card, cut out the white  
shape and use as your template to draw around.

This would let you use it on any folded flake without  
printing it

Any questions/ suggestions, email [ayesha@1010uk.org](mailto:ayesha@1010uk.org)

