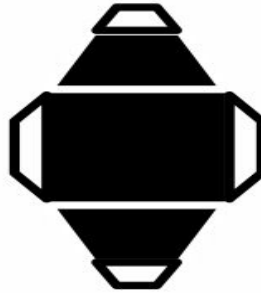




A

Cut out B and roll into a circle. Using the Triangle cut outs to tape and hold circle together. Cut out the outside of A. NOT the inside of A. Push A into the center of B to cover up the triangle cut outs. Attached the newly created circle as the lens on the front of the camera.

B

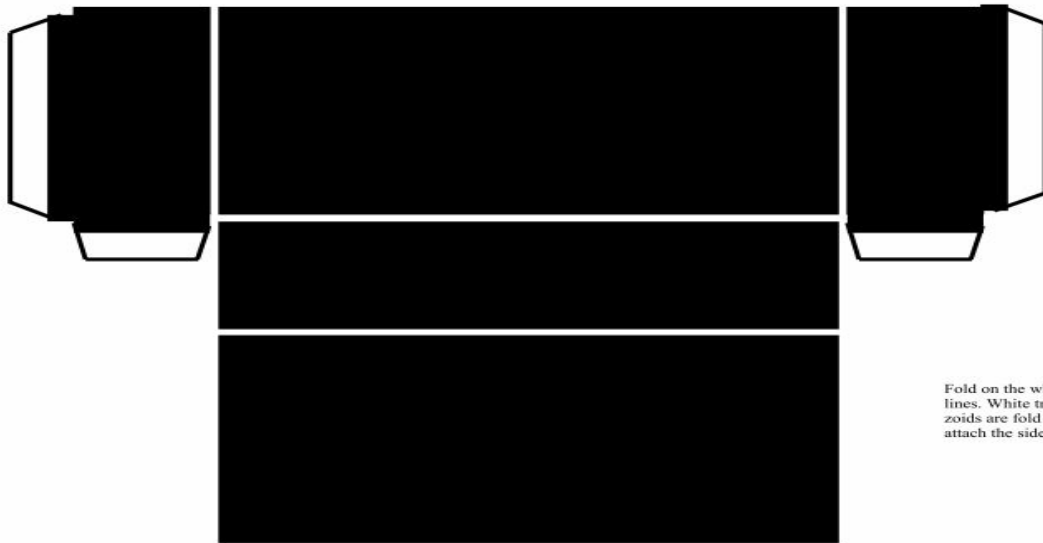


C



D

Cut out C and attach to the top of the camera as the view finder. Cut out D and cover C.



Fold on the white lines. White trapezoids are fold tabs to attach the sides.