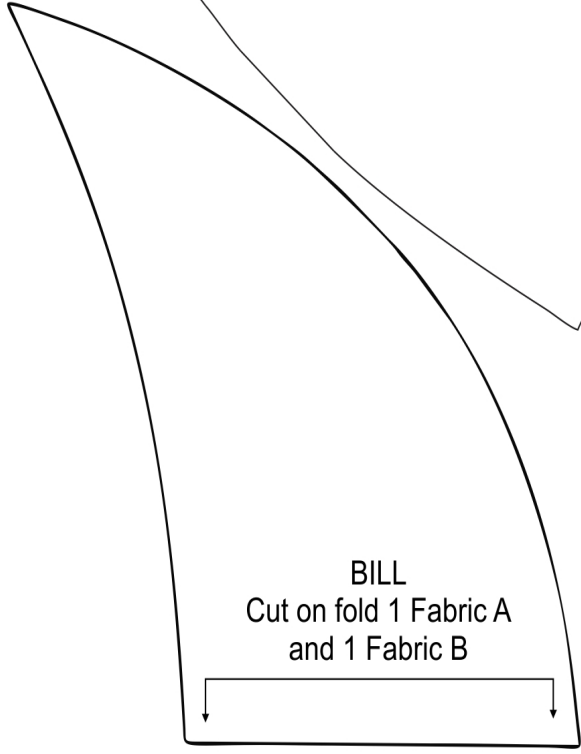
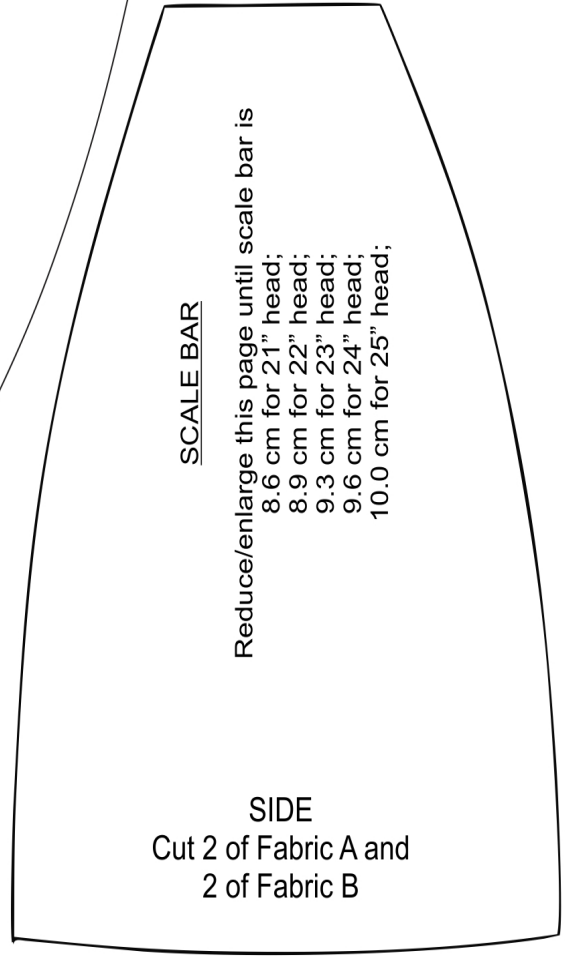


FRONT/BACK
Cut 4 of Fabric A
and 4 of Fabric B

HEAD BAND: Cut one each Fabric A and Fabric B
(head circumference+1/2") long
and 2" wide



BILL
Cut on fold 1 Fabric A
and 1 Fabric B



SCALE BAR

Reduce/enlarge this page until scale bar is

- 8.6 cm for 21" head;
- 8.9 cm for 22" head;
- 9.3 cm for 23" head;
- 9.6 cm for 24" head;
- 10.0 cm for 25" head;

SIDE
Cut 2 of Fabric A and
2 of Fabric B