

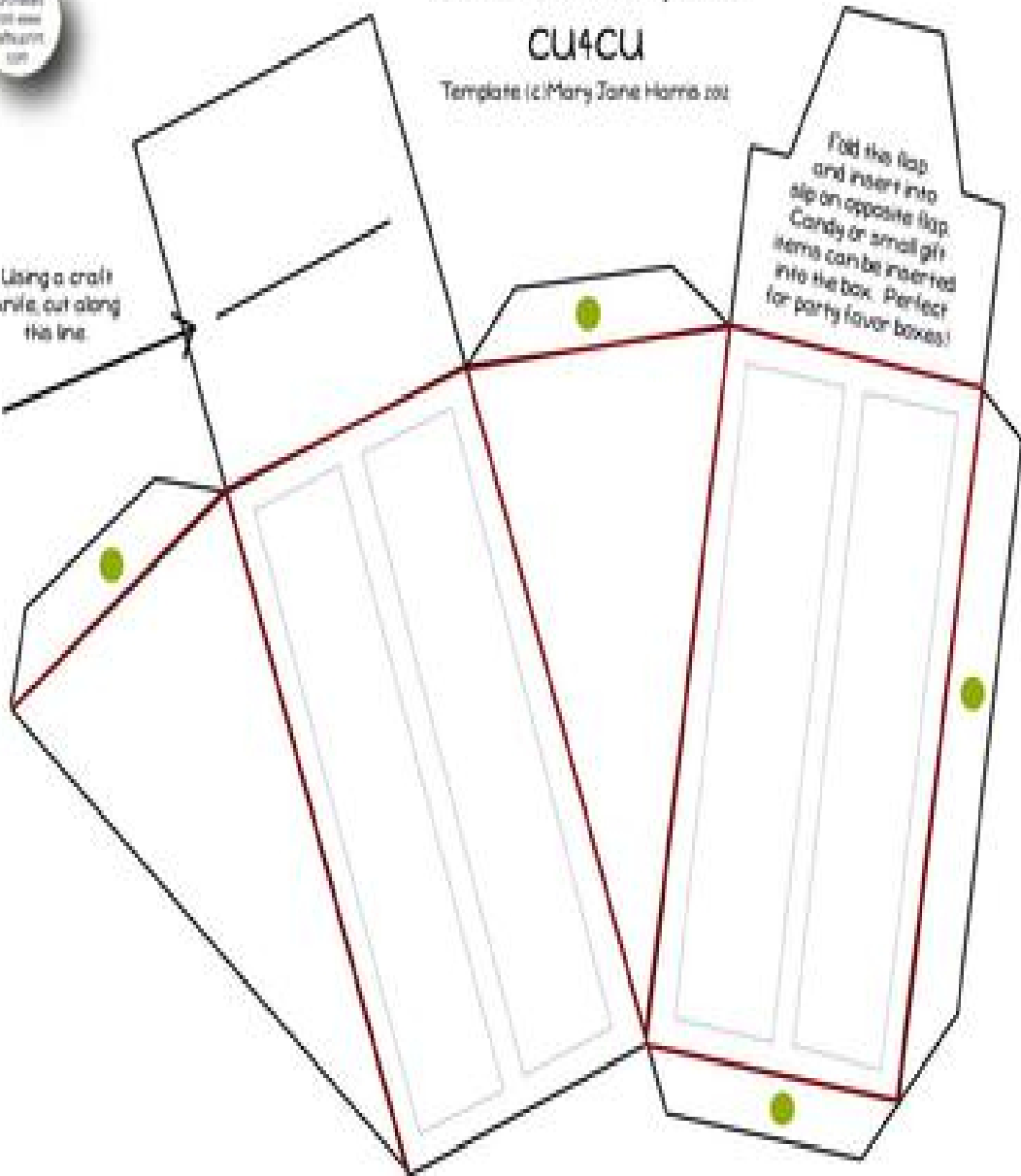


Cake Box Template

CU4CU

Template (c) Mary Jane Harris 201

Using a craft knife, cut along this line.



Directions:
Decorate cake slice using a color for the frosting, don't forget to color inside the long rectangles to form the cake (brown for chocolate, light yellow for lemon, and etc.) and then use elements as decorations.

Cut out entire shape. Score and fold all red lines. Leave flaps marked with a green dot white, they won't show when box is finished.