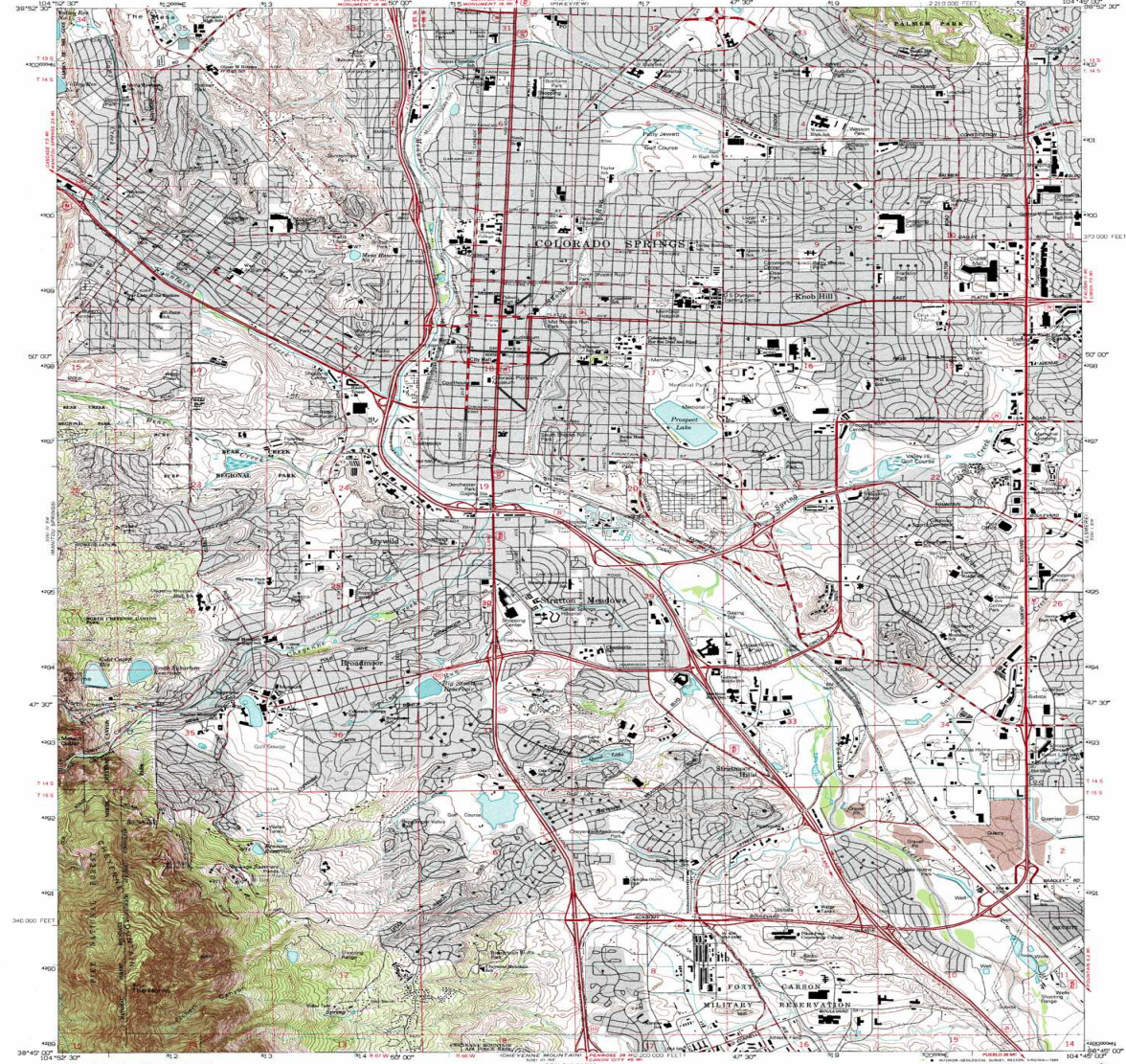
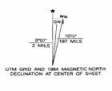


UNITED STATES  
DEPARTMENT OF THE INTERIOR  
GEOLOGICAL SURVEY

COLORADO SPRINGS QUADRANGLE  
COLORADO-EL PASO CO.  
7.5 MINUTE SERIES (TOPOGRAPHIC)



Produced by the United States Geological Survey  
Control by USGS and NCEM/NSA  
Compiled from aerial photographs taken 1947. Field checked 1985.  
Revised from aerial photographs taken 1988 and other sources.  
Map revised 1994. Contour and spot elevations have not been  
revised and may differ from other sources.  
North American Datum of 1927 (NAD 27). Projection and  
scale 1000 meters Universal Transverse Mercator 1084 zone 13  
10 000-foot scale. Colorado Coordinate System, central zone.  
North American Datum of 1983 (NAD 83) is shown by dashed  
contour lines. The values of the north-south 100 000 and 100 000  
or 7.5-minute intersections are obtainable from National Geographic  
Survey (NAD 83) software.  
There may be private inholdings within the boundaries of the  
National or State reservations shown on this map.  
Gray tint indicates areas in which only landmark buildings are shown.



SCALE 1:24 000  
CONTOUR INTERVAL 20 FEET  
NATIONAL GEODETIC VERTICAL DATUM OF 1929



ROAD CLASSIFICATION  
Heavy-duty ————— Light-duty  
Medium-duty ————— Unimproved dirt  
Interstate Route U.S. Route State Route

THIS MAP COMPLETES WITH NATIONAL MAP ACCURACY STANDARDS  
FOR SALE BY U.S. GEOLOGICAL SURVEY, DENVER, COLORADO 80202, OR RESTON, VIRGINIA 22092  
A FOLDER INCLUDING TOPOGRAPHIC MAPS AND SYMBOLS IS AVAILABLE ON REQUEST

COLORADO SPRINGS, CO  
38104 G7-1F-024  
REVISED 1994  
DMA 5061 10 18-88983-1077