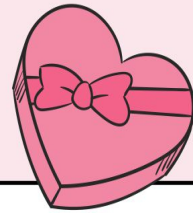




Valentine Fun Candy Trivia



- _____ This candy was named after 1912 flotation devices.
- _____ Each package of this candy bar used to contain pieces of chocolate, vanilla, and strawberry.
- _____ According to its marketing campaign, this candy bar "really satisfies."
- _____ These candies got their name because they never came out of the machine in the shape they were intended to.
- _____ This was the first penny candy to be individually wrapped.
- _____ This candy's original name was Papa Sucker.
- _____ These chocolate treats were named after the sound the machine makes when depositing them.
- _____ This sweet treat marketed itself as "the great American candy bar."
- _____ This candy's name was changed in 1985 to capitalize on the success of a popular 80s doll.
- _____ This candy bar was named after a milkshake flavor containing chocolate, caramel, and malted milk powder.
- _____ This conversation candy has been a Valentine and wedding favorite for well over a century.
- _____ This candy's dispensers have become popular collectibles.

- A. Sour Patch Kids
- B. Hershey's Kisses
- C. 3 Musketeers
- D. Tootsie Roll
- E. Hershey Bar
- F. Sweethearts
- G. Life Savers
- H. Sugar Daddy
- I. Milk Duds
- J. Snickers
- K. Milky Way
- L. Pez

